

Introducing House groups & Small groups

As we continue to grow and develop as a church we are recognising the importance for people to be part of a small group that meets either in a home or as a group meeting to share fellowship within the church.

These small groups are a key part of our church life because it is in small groups that we grow the deeper relationships that will help us to feel part of the larger body of the church.

It is also here that we have the opportunity to share our lives; have fun together, learn together, pray together and have the opportunity to care for one another at a deeper level.



Why are house groups & Small groups so important?

Jesus had his own small group - the 12 disciples. He cared for them and treated them as family. In a society where there are so many broken homes and where people do not feel a sense of community - small groups offer an excellent place for people to get together.

A small group, cell group or house group, it doesn't matter what you call it, is the most fundamental unit within the church community. It provides a secure, intimate place where you can explore your gifts and walk of faith. In these small groups people are free to voice their personal needs and find the help and support that they need.

The purpose of our small groups at Clarence Park Baptist Church:

- To build closer accountable relationships within the church family
- To grow in Christ through the study and application of Gods word
- To serve Jesus by receiving / identifying and expressing the Spiritual Gifts
- To support each other practically and in prayer
- To reach out to others who do not know Jesus

Are all the groups the same?

Each of our small groups have their own style and characteristics depending on the leaders and the people that attend them.

Usually a house group is no larger than 15 people and we encourage groups that grow too large to multiply into more groups so that each group can easily maintain friendships.



Do the different groups Follow the same programme and teaching material?

Each of the house groups generally use the same teaching material; although each group does have the freedom to set its own programme based on topics that the members are particularly interested in.

Can anyone join a group?

If you worship with us regularly at Clarence Park Baptist Church and are not already part of a small group we would love you to join one.

If you would like to join a group then please speak firstly to either of our deacons who help oversee the discipleship area of our church life.

Mrs Ann Palmer tel: 01934 645704
Or

Mr Kevin Speakman tel: 01934 412464

Alternatively you can contact
our minister:

Rev Steve Christian Tel:01934 628659.

When do the groups meet?

Generally our house groups meet twice a month. Most meet on the 2nd and 4th week of the month (*unless other wise stated*) although because they meet on different days of the week the calendar can become confusing. Other groups only meet monthly - so looking at the church weekly notice sheet or speaking to the house group leader is essential.

Alongside our **house groups** our small groups also include two **ladies fellowships** and a group for those with **learning difficulties**. Again the details in the weekly notice sheet will keep you informed as to when these groups are meeting.

Current house groups & small groups @ CPBC.

(HG) = indicates Home group

Mon

7:45pm

Ladies Friendship Group
(Weekly @ CPBC)

8pm

BUIld Bible Class

(For those with learning difficulties)
(Monthly @ CPBC)

Tue

8pm @ the manse (HG)

Wed

2:30pm

Baptist Women's Fellowship
(1st & 3rd @ CPBC)

7:45pm @ Tim & Kaye Cooke (HG)

8pm @ Jim & Avril Wilson (HG)
(3rd Wed of the month only)

Thurs

10am @ Ann Palmer
led By Ray Green (HG)

8pm @ Lynn King (HG)

Further details can be found

On the church web site:

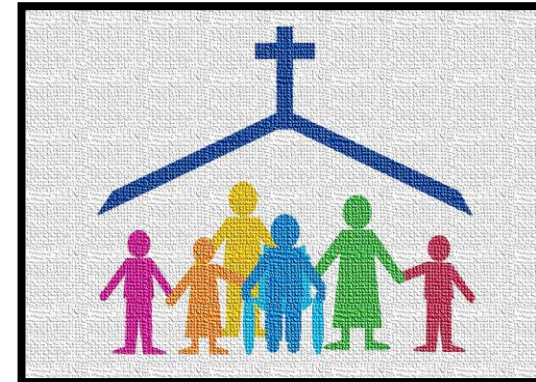
www.cpbc.co.uk

Or email the church

enquiries@cpbc.co.uk

House groups & Small groups

Sharing our lives
together as we grow
in our faith at
**Clarence Park
Baptist Church**



An introduction
To House groups
& Small groups
@ CPBC